

PALMER INDUSTRIES

CUSTOM SINK LEG SOLUTIONS



SINK²⁰
24 LEGS

March 15, 2024

The Bristol

American Manufacturing
Warwick, Rhode Island



Bayonne

Palmer Industries is the leading manufacturer of vanity sink legs. Palmer washstands are proudly manufactured in the USA – designed, fabricated, assembled, and packaged in our Rhode Island facility. We maintain complete control over the entire process, enabling Palmer to custom fabricate any style, any size, any configuration, and any finish, efficiently and accurately.

All page numbers shown in the Table of Contents or referenced on any page are active HyperLinks, click on them and they will take you to that page. Many other references are also active links.

Table of Contents

click on a page number to navigate

The Palmer Story	4
Custom Sizing	6
Custom Designs	7
Precision Engineering	8

STYLES

Classic Collection

T Tapered Foot	12
C Decorative Collar	13
BL Ball Foot	14
B Bun Foot	15

Traditional Collection

E Essex	16
W Westport	17
CAP Capital	18
K Kingston	19
V Victorian	20
P Providence	21
REN Renaissance	22
PREN Petite Renaissance	23
N Newport	24
BAY Bayonne	25
FR Franklin	25
EM Embry	26
SH Soho	27

Modern Collection

S Studio	28
M Minimal	29
MET Metro	30
MOD Modern	31
SQ Square	32
L Linear	33
J Jamestown	34
BR Bristol	35

Wall Mount Collection

REG Regency	36
A Apex	37
SG Signature	38

Finishes & Materials	40
Shelving & Supports	42
Options & Accessories	44
Pairing with China Sinks	47
Anatomy of a Leg System	48
Tubing Diameter Reference	49
Contact Palmer	50



Kingston



Working with architects & designers worldwide to produce unique expressions of elegance

As a designer, engineer, and manufacturer of custom architectural metalwork, Palmer specializes in the production of America's finest Custom Vanity Sink Legs.

Sink Legs do not simply play a supporting role in the design of your vanity; they play the defining role. The choice between elegant legs or just a wood box changes everything...

A Palmer leg system will integrate perfectly with your unique choices of personal colors, wall, floor, and counter materials, plumbing fixtures, and style.

Palmer washstands will support any choice of counter material, such as granite, marble, quartz, porcelain, cement, composite, glass, metal, or wood. You provide the counter, and Palmer will design the perfect leg system exactly to your unique specifications... an ideal marriage.

Engineered in solid brass and richly finished in a full palette of lustrous platings and hand-rubbed patinas, Palmer Industries brings you the finest in custom vanity sink legs, perfectly at home in your elegant master bedroom suite or your understated powder room.

Table of Contents

click on a page number to navigate

The Palmer Story	4
Custom Sizing	6
Custom Designs	7
Precision Engineering	8

STYLES

Classic Collection	
T Tapered Foot	12
C Decorative Collar	13
BL Ball Foot	14
B Bun Foot	15
Traditional Collection	
E Essex	16
W Westport	17
CAP Capital	18
K Kingston	19
V Victorian	20
P Providence	21
REN Renaissance	22
PREN Petite Renaissance	23
N Newport	24
BAY Bayonne	25
FR Franklin	25
EM Embry	26
SH Soho	27
Modern Collection	
S Studio	28
M Minimal	29
MET Metro	30
MOD Modern	31
SQ Square	32
L Linear	33
J Jamestown	34
BR Bristol	35
Wall Mount Collection	
REG Regency	36
A Apex	37
SG Signature	38

Finishes & Materials	40
Shelving & Supports	42
Options & Accessories	44
Pairing with China Sinks	47
Anatomy of a Leg System	48
Tubing Diameter Reference	49
Contact Palmer	50



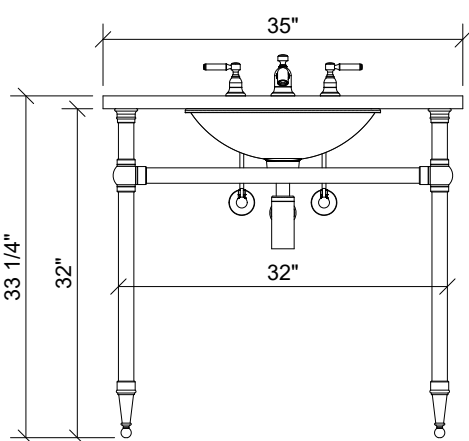
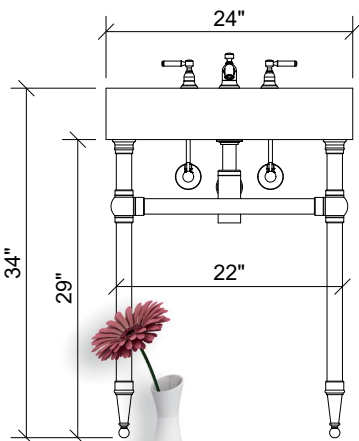
At Palmer, Custom Sizing is not "Custom"...

Each and every leg system
is built to order...
one at a time...
to your exact size

One artisan...
One leg system...
One individual
"work of art"



Tapered Foot



Because Palmer hand
builds ALL leg systems to
order, we can easily adjust
the width, depth, and
finished height to suit your
customer's exact needs for
a modest additional cost.

Give us your counter
dimensions and we'll
deliver an exact fit.

R-020723
R-020723



Palmer is a Boutique Designer & Manufacturer



If You Can Dream It,
Palmer Can Build It...



Tapered Foot

From your inspiration to the final polishing touch, Palmer's dedicated team of
engineers and artisans can take your project from conception to completion.

Provide us with your simple sketch, magazine clipping, or concept images from
social media, and Palmer will quickly propose a solution to accommodate your
design intent.

any style, any size, any configuration, and any finish...

Table of Contents

click on a page number to navigate

The Palmer Story	4
Custom Sizing	6
Custom Designs	7
Precision Engineering	8

STYLES

Classic Collection	
T Tapered Foot	12
C Decorative Collar	13
BL Ball Foot	14
B Bun Foot	15
Traditional Collection	
E Essex	16
W Westport	17
CAP Capital	18
K Kingston	19
V Victorian	20
P Providence	21
REN Renaissance	22
PREN Petite Renaissance	23
N Newport	24
BAY Bayonne	25
FR Franklin	25
EM Embry	26
SH Soho	27
Modern Collection	
S Studio	28
M Minimal	29
MET Metro	30
MOD Modern	31
SQ Square	32
L Linear	33
J Jamestown	34
BR Bristol	35
Wall Mount Collection	
REG Regency	36
A Apex	37
SG Signature	38

Finishes & Materials	40
Shelving & Supports	42
Options & Accessories	44
Pairing with China Sinks	47
Anatomy of a Leg System	48
Tubing Diameter Reference	49
Contact Palmer	50



Palmer specializes in meeting your custom design needs:

Flexible Design...
Rigid Assembly...

Palmer offers unlimited design flexibility to create exactly the style and configuration of console you prefer, while never compromising the engineering details that ultimately produce a sound and rigid assembly.

Our internal “unseen” components are just as impressive in their function as our external decorative fittings are in their form.

Components such as custom-designed reinforcing plugs and nuts, tubing connectors, and heavy-duty machine fasteners (never “sheet-metal” screws), all chosen in appropriate metals such as stainless steel and tempered aluminum, are carefully integrated to produce a seamless and lasting console.



Table of Contents

click on a page number to navigate

The Palmer Story	4
Custom Sizing	6
Custom Designs	7
Precision Engineering	8

STYLES

Classic Collection	
T Tapered Foot	12
C Decorative Collar	13
BL Ball Foot	14
B Bun Foot	15
Traditional Collection	
E Essex	16
W Westport	17
CAP Capital	18
K Kingston	19
V Victorian	20
P Providence	21
REN Renaissance	22
PREN Petite Renaissance	23
N Newport	24
BAY Bayonne	25
FR Franklin	25
EM Embry	26
SH Soho	27
Modern Collection	
S Studio	28
M Minimal	29
MET Metro	30
MOD Modern	31
SQ Square	32
L Linear	33
J Jamestown	34
BR Bristol	35
Wall Mount Collection	
REG Regency	36
A Apex	37
SG Signature	38

Finishes & Materials	40
Shelving & Supports	42
Options & Accessories	44
Pairing with China Sinks	47
Anatomy of a Leg System	48
Tubing Diameter Reference	49
Contact Palmer	50

STYLES

a gallery of images



Westport



R-011524

R-011524



index to a gallery of images

Classic Collection

- T Tapered Foot 12
- C Decorative Collar 13
- BL Ball Foot 14
- B Bun Foot 15

Traditional Collection

- E Essex 16
- W Westport 17
- CAP Capital 18
- K Kingston 19
- V Victorian 20
- P Providence 21
- REN Renaissance 22
- PREN Petite Ren 23
- N Newport 24
- BAY Bayonne 25
- FR Franklin 25
- EM Embry 26
- SH Soho 27

Modern Collection

- S Studio 28
- M Minimal 29
- MET Metro 30
- MOD Modern 31
- SQ Square 32
- L Linear 33
- J Jamestown 34
- BR Bristol 35

Wall Mount Collection

- REG Regency 36
- A Apex 37
- SG Signature 38



Table of Contents

click on a page number to navigate

The Palmer Story	4
Custom Sizing	6
Custom Designs	7
Precision Engineering	8

STYLES

Classic Collection		
T Tapered Foot	12	
C Decorative Collar	13	
BL Ball Foot	14	
B Bun Foot	15	
Traditional Collection		
E Essex	16	
W Westport	17	
CAP Capital	18	
K Kingston	19	
V Victorian	20	
P Providence	21	
REN Renaissance	22	
REN Petite Renaissance	23	
N Newport	24	
BAY Bayonne	25	
FR Franklin	25	
EM Embry	26	
SH Soho	27	
Modern Collection		
S Studio	28	
M Minimal	29	
MET Metro	30	
MOD Modern	31	
SQ Square	32	
L Linear	33	
J Jamestown	34	
BR Bristol	35	
Wall Mount Collection		
REG Regency	36	
A Apex	37	
SG Signature	38	
Finishes & Materials		40
Shelving & Supports		42
Options & Accessories		44
Pairing with China Sinks		47
Anatomy of a Leg System		48
Tubing Diameter Reference		49
Contact Palmer		50



TAPERED FOOT

T

The *Tapered Foot* console, with its classic foot detail and distinctive ball corner joints, remains Palmer's most popular style.



LS21T with MTI Modern counter

available in 1½" diameter and 1" diameter tubing

DECORATIVE COLLAR

C

The crisply machined decorative collars, positioned below the corner joints and used as feet, define the *Decorative Collar* style.



LS5C + TS5 + SS5R + TRL + TRR

shown above with optional hotel style shelf, rail shelf supports, and auxiliary towel rails

available in 1½" diameter and 1" diameter tubing

click on a page number to navigate

The Palmer Story	4
Custom Sizing	6
Custom Designs	7
Precision Engineering	8

STYLES

Classic Collection	
T Tapered Foot	12
C Decorative Collar	13
BL Ball Foot	14
B Bun Foot	15
Traditional Collection	
E Essex	16
W Westport	17
CAP Capital	18
K Kingston	19
V Victorian	20
P Providence	21
REN Renaissance	22
PREN Petite Renaissance	23
N Newport	24
BAY Bayonne	25
FR Franklin	25
EM Embry	26
SH Soho	27
Modern Collection	
S Studio	28
M Minimal	29
MET Metro	30
MOD Modern	31
SQ Square	32
L Linear	33
J Jamestown	34
BR Bristol	35
Wall Mount Collection	
REG Regency	36
A Apex	37
SG Signature	38

Finishes & Materials	40
Shelving & Supports	42
Options & Accessories	44
Pairing with China Sinks	47
Anatomy of a Leg System	48
Tubing Diameter Reference	49
Contact Palmer	50



BALL FOOT

BL

The *Ball Foot* style features Palmer's unique ball-and-socket corner joints, with their sharp lines and visual heft, paired with perfectly matching ball feet.



LS2BL + SD



LS2BL + SD

shown with split diameter option

available in 1½" diameter and 1" diameter tubing

R-020723

R-020723

BUN FOOT

B

The bun foot has long been a classic architectural feature in fine furniture design, and Palmer's *Bun Foot* console features a robust and elegant version of this style.



LS2B + FR

shown above with Palmer custom mirror supports and optional front riser

available in 1½" diameter and 1" diameter tubing



LS2B

click on a page number to navigate

The Palmer Story	4
Custom Sizing	6
Custom Designs	7
Precision Engineering	8

STYLES

Classic Collection	
T Tapered Foot	12
C Decorative Collar	13
BL Ball Foot	14
B Bun Foot	15
Traditional Collection	
E Essex	16
W Westport	17
CAP Capital	18
K Kingston	19
V Victorian	20
P Providence	21
REN Renaissance	22
PREN Petite Renaissance	23
N Newport	24
BAY Bayonne	25
FR Franklin	25
EM Embry	26
SH Soho	27
Modern Collection	
S Studio	28
M Minimal	29
MET Metro	30
MOD Modern	31
SQ Square	32
L Linear	33
J Jamestown	34
BR Bristol	35
Wall Mount Collection	
REG Regency	36
A Apex	37
SG Signature	38

Finishes & Materials	40
Shelving & Supports	42
Options & Accessories	44
Pairing with China Sinks	47
Anatomy of a Leg System	48
Tubing Diameter Reference	49
Contact Palmer	50



The Traditional Collection

ESSEX
E

The *Essex* features a refined tapered leg paired with a slender foot and perfectly coordinated fittings.



LS2E

1½" diameter legs tapering
to 1" diameter at the foot

1" diameter crossbars



R-020723

R-020723



The Traditional Collection

WESTPORT
W

The *Westport* features a round head transitioning to a slender leg, with complementary fittings, and a single horizontal crossbar.



LS2W

1½" diameter head
1" diameter legs
1" diameter crossbars



LS2W

Table of Contents

click on a page number to navigate

The Palmer Story	4
Custom Sizing	6
Custom Designs	7
Precision Engineering	8

STYLES

Classic Collection	
T Tapered Foot	12
C Decorative Collar	13
BL Ball Foot	14
B Bun Foot	15
Traditional Collection	
E Essex	16
W Westport	17
CAP Capital	18
K Kingston	19
V Victorian	20
P Providence	21
REN Renaissance	22
PREN Petite Renaissance	23
N Newport	24
BAY Bayonne	25
FR Franklin	25
EM Embry	26
SH Soho	27
Modern Collection	
S Studio	28
M Minimal	29
MET Metro	30
MOD Modern	31
SQ Square	32
L Linear	33
J Jamestown	34
BR Bristol	35
Wall Mount Collection	
REG Regency	36
A Apex	37
SG Signature	38

Finishes & Materials	40
Shelving & Supports	42
Options & Accessories	44
Pairing with China Sinks	47
Anatomy of a Leg System	48
Tubing Diameter Reference	49
Contact Palmer	50



The Traditional Collection

CAPITAL

CAP

The *Capital* style is defined by its prominent square head, slender leg, and distinctive double horizontal crossbars.



LS2CAP

shown above with Palmer custom wall-mounted Towel Rack

1½" square head
1" diameter legs
1" diameter crossbars

LS2CAP

The Traditional Collection

KINGSTON

K

Vintage tapered legs with decorative collars, classic ball-and-socket joints, a tapered foot, and slender crossbars all combine to create the *Kingston*.



LS2K

1½" diameter legs tapering to 1" diameter at the foot

1" diameter crossbars

R-020723

R-020723

LS2K

Table of Contents

click on a page number to navigate

The Palmer Story	4
Custom Sizing	6
Custom Designs	7
Precision Engineering	8

STYLES

Classic Collection	
T Tapered Foot	12
C Decorative Collar	13
BL Ball Foot	14
B Bun Foot	15
Traditional Collection	
E Essex	16
W Westport	17
CAP Capital	18
K Kingston	19
V Victorian	20
P Providence	21
REN Renaissance	22
PREN Petite Renaissance	23
N Newport	24
BAY Bayonne	25
FR Franklin	25
EM Embry	26
SH Soho	27
Modern Collection	
S Studio	28
M Minimal	29
MET Metro	30
MOD Modern	31
SQ Square	32
L Linear	33
J Jamestown	34
BR Bristol	35
Wall Mount Collection	
REG Regency	36
A Apex	37
SG Signature	38

Finishes & Materials	40
Shelving & Supports	42
Options & Accessories	44
Pairing with China Sinks	47
Anatomy of a Leg System	48
Tubing Diameter Reference	49
Contact Palmer	50



VICTORIAN

V

The *Victorian* offers an artfully crafted and open design, featuring auxiliary towel rails and split collar shelf supports, while incorporating ample storage space below.



LS41V

1" diameter legs
5/8" diameter towel rails

shown with stone shelf
supplied by customer

LS41V

PROVIDENCE

P

The *Providence* model, featuring a striking square head, turned neck, and mildly tapered legs, seamlessly incorporates stone aprons (a "skirt") concealing the sink basin and hardware below the counter.



LS2P

2" square head

1 1/2" diameter legs tapering to
1" diameter at the foot

stone top & aprons by others

R-020723

R-020723

click on a page number to navigate

The Palmer Story	4
Custom Sizing	6
Custom Designs	7
Precision Engineering	8

STYLES

Classic Collection	
T Tapered Foot	12
C Decorative Collar	13
BL Ball Foot	14
B Bun Foot	15
Traditional Collection	
E Essex	16
W Westport	17
CAP Capital	18
K Kingston	19
V Victorian	20
P Providence	21
REN Renaissance	22
PREN Petite Renaissance	23
N Newport	24
BAY Bayonne	25
FR Franklin	25
EM Embry	26
SH Soho	27
Modern Collection	
S Studio	28
M Minimal	29
MET Metro	30
MOD Modern	31
SQ Square	32
L Linear	33
J Jamestown	34
BR Bristol	35
Wall Mount Collection	
REG Regency	36
A Apex	37
SG Signature	38

Finishes & Materials	40
Shelving & Supports	42
Options & Accessories	44
Pairing with China Sinks	47
Anatomy of a Leg System	48
Tubing Diameter Reference	49
Contact Palmer	50



RENAISSANCE

REN

The *Renaissance* console, with its broadly sweeping center curve flanked by pairs of legs on either side, represents a classic and timeless architectural style.



LS41REN



LS41REN

shown above with a Stone Forest Renaissance sink and featuring a matching Palmer wall-mounted Towel Rack and free-standing Palmer Étagère

1" diameter legs
1" diameter crossbars



R-011224

R-011224



PETITE RENAISSANCE

PREN

The *Petite Renaissance* model, is a narrower, 2 leg, diminutive version of our popular 4 leg Renaissance washstand.



LS21REN

shown above with a Stone Forest Petite-Renaissance sink C92-WL30

1" diameter legs
1" diameter crossbars



LS21REN

click on a page number to navigate

The Palmer Story	4
Custom Sizing	6
Custom Designs	7
Precision Engineering	8

STYLES

Classic Collection	
T Tapered Foot	12
C Decorative Collar	13
BL Ball Foot	14
B Bun Foot	15
Traditional Collection	
E Essex	16
W Westport	17
CAP Capital	18
K Kingston	19
V Victorian	20
P Providence	21
REN Renaissance	22
PREN Petite Renaissance	23
N Newport	24
BAY Bayonne	25
FR Franklin	25
EM Embry	26
SH Soho	27
Modern Collection	
S Studio	28
M Minimal	29
MET Metro	30
MOD Modern	31
SQ Square	32
L Linear	33
J Jamestown	34
BR Bristol	35
Wall Mount Collection	
REG Regency	36
A Apex	37
SG Signature	38

Finishes & Materials	40
Shelving & Supports	42
Options & Accessories	44
Pairing with China Sinks	47
Anatomy of a Leg System	48
Tubing Diameter Reference	49
Contact Palmer	50



NEWPORT

N

A vanity console featuring the combination of classic metal finishes with the rich natural beauty of tapered walnut heartwood legs and horizontal crossbar.



LS2N + HB

Our rich walnut heartwood is a natural product; the color tone and wood grain will vary as each piece is unique

LS2N + HB

shown with optional hammered ball fittings

1 1/2" diameter legs tapering to 1" diameter at the foot

1" diameter crossbars

combination wood & metal front crossbar



R-020723

R-020723



BAYONNE

BAY

The *Bayonne* console features four walnut legs and curved side-bars that complement the unique shape of the Stone Forest Bayonne top.

1 1/2" diameter legs tapering to 1" diameter at the foot

1" diameter crossbars

shown with optional hammered ball fittings



LS4BAY + HB

FRANKLIN

FR

The *Franklin* console is designed to fit this unique top shape with scalloped corners, and features four metal legs, curved side-bars, and long modern feet



LS4FR

click on a page number to navigate

The Palmer Story	4
Custom Sizing	6
Custom Designs	7
Precision Engineering	8

STYLES

Classic Collection	
T Tapered Foot	12
C Decorative Collar	13
BL Ball Foot	14
B Bun Foot	15
Traditional Collection	
E Essex	16
W Westport	17
CAP Capital	18
K Kingston	19
V Victorian	20
P Providence	21
REN Renaissance	22
PREN Petite Renaissance	23
N Newport	24
BAY Bayonne	25
FR Franklin	25
EM Embry	26
SH Soho	27
Modern Collection	
S Studio	28
M Minimal	29
MET Metro	30
MOD Modern	31
SQ Square	32
L Linear	33
J Jamestown	34
BR Bristol	35
Wall Mount Collection	
REG Regency	36
A Apex	37
SG Signature	38

Finishes & Materials	40
Shelving & Supports	42
Options & Accessories	44
Pairing with China Sinks	47
Anatomy of a Leg System	48
Tubing Diameter Reference	49
Contact Palmer	50



EMBRY

EM

The Embry makes an elegant statement with its sturdy 2" diameter head transitioning through a sculpted neck into the leg's gentle taper. The distinct contrast in diameter defines this sophisticated silhouette.



The Embry leg incorporates a unique leveling pin in the bottom of the foot, allowing for 3/4" of height adjustment, correcting any out-of-level floor condition.

2" diameter head with tapered legs

EM200



R-011224

R-011224



SOHO

SH

In an inspired, but radical, departure from our modular, tube & connector style vanity leg systems, Palmer introduces the curvaceous "Soho" precision-machined solid brass leg.



This elegant 33" tall leg flows from its widest embellishment at 2-3/4" diameter undulating gracefully down to a 5/8" ankle above

SH200

click on a page number to navigate

The Palmer Story	4
Custom Sizing	6
Custom Designs	7
Precision Engineering	8

STYLES

Classic Collection	
T Tapered Foot	12
C Decorative Collar	13
BL Ball Foot	14
B Bun Foot	15
Traditional Collection	
E Essex	16
W Westport	17
CAP Capital	18
K Kingston	19
V Victorian	20
P Providence	21
REN Renaissance	22
PREN Petite Renaissance	23
N Newport	24
BAY Bayonne	25
FR Franklin	25
EM Embry	26
SH Soho	27
Modern Collection	
S Studio	28
M Minimal	29
MET Metro	30
MOD Modern	31
SQ Square	32
L Linear	33
J Jamestown	34
BR Bristol	35
Wall Mount Collection	
REG Regency	36
A Apex	37
SG Signature	38

Finishes & Materials	40
Shelving & Supports	42
Options & Accessories	44
Pairing with China Sinks	47
Anatomy of a Leg System	48
Tubing Diameter Reference	49
Contact Palmer	50



STUDIO

S

The *Studio* console elevates modern industrial utility to a state of luxurious design with its sharp refined lines, and understated fittings.



LS2SNR



LS2SNR with Catalano Zero 100 sink

available in 1½" diameter and 1" diameter tubing



R-020723

R-020723



LS2M with Duravit DuraStyle sink

1½" diameter legs tapering to 1" diameter at the foot

1" diameter crossbars

MINIMAL

M

The *Minimal* model, with its unadorned tapered legs and clean fittings, affords a sleek and fashionable sense for today's modern bathrooms.



LS2M

The Palmer Story	4
Custom Sizing	6
Custom Designs	7
Precision Engineering	8

STYLES

Classic Collection	
T Tapered Foot	12
C Decorative Collar	13
BL Ball Foot	14
B Bun Foot	15

Traditional Collection	
E Essex	16
W Westport	17
CAP Capital	18
K Kingston	19
V Victorian	20
P Providence	21
REN Renaissance	22
PREN Petite Renaissance	23
N Newport	24
BAY Bayonne	25
FR Franklin	25
EM Embry	26
SH Soho	27

Modern Collection	
S Studio	28
M Minimal	29
MET Metro	30
MOD Modern	31
SQ Square	32
L Linear	33
J Jamestown	34
BR Bristol	35

Wall Mount Collection	
REG Regency	36
A Apex	37
SG Signature	38

Finishes & Materials	40
Shelving & Supports	42
Options & Accessories	44
Pairing with China Sinks	47
Anatomy of a Leg System	48
Tubing Diameter Reference	49
Contact Palmer	50



METRO

MET

The *Metro* console offers clean uninterrupted lines and simple styling, in a diminutive scale well suited to smaller spaces.



LS21MET + TS2 + SS2LP

LS21MET + TS2 + SS2LP with Duravit Vero sink

shown with optional hotel style shelf and low profile shelf supports

available in 1" diameter legs with 5/8" diameter offset crossbars (as shown), and also 1½" diameter legs with 1" diameter offset crossbars



R-020723
R-020723



MODERN

MOD

Inspired by Danish Modern design, the *Modern* console features a long sleek foot, smooth contours, and simple geometric patterns.



LS2MOD

1½" diameter legs
1" diameter crossbars

LS2MOD

STYLES

Classic Collection

T Tapered Foot	12
C Decorative Collar	13
BL Ball Foot	14
B Bun Foot	15

Traditional Collection

E Essex	16
W Westport	17
CAP Capital	18
K Kingston	19
V Victorian	20
P Providence	21
REN Renaissance	22
PREN Petite Renaissance	23
N Newport	24
BAY Bayonne	25
FR Franklin	25
EM Embry	26
SH Soho	27

Modern Collection

S Studio	28
M Minimal	29
MET Metro	30
MOD Modern	31
SQ Square	32
L Linear	33
J Jamestown	34
BR Bristol	35

Wall Mount Collection

REG Regency	36
A Apex	37
SG Signature	38

Finishes & Materials	40
Shelving & Supports	42
Options & Accessories	44
Pairing with China Sinks	47
Anatomy of a Leg System	48
Tubing Diameter Reference	49
Contact Palmer	50



SQUARE

SQ

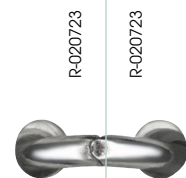
The contemporary *Square* model is defined by its strong horizontal and vertical lines created by the crisp-edge square tubing, and punctuated by complementary square and stylish fittings.



LS2SQ with Duravit Vero sink

1 1/2" square legs
1" square crossbars

LS2SQ



LS41L + GS4

1" square legs
1" square crossbars

shown with custom
fabricated marble top
and optional glass shelf

LINEAR

L

The integration of the strong rectilinear lines of square tubing with concealed flush joinery creates the cutting edge look and appeal of the *Linear* console.



LS41L + GS4

click on a page number to navigate

The Palmer Story	4
Custom Sizing	6
Custom Designs	7
Precision Engineering	8

STYLES

Classic Collection	
T Tapered Foot	12
C Decorative Collar	13
BL Ball Foot	14
B Bun Foot	15
Traditional Collection	
E Essex	16
W Westport	17
CAP Capital	18
K Kingston	19
V Victorian	20
P Providence	21
REN Renaissance	22
PREN Petite Renaissance	23
N Newport	24
BAY Bayonne	25
FR Franklin	25
EM Embry	26
SH Soho	27
Modern Collection	
S Studio	28
M Minimal	29
MET Metro	30
MOD Modern	31
SQ Square	32
L Linear	33
J Jamestown	34
BR Bristol	35
Wall Mount Collection	
REG Regency	36
A Apex	37
SG Signature	38

Finishes & Materials	40
Shelving & Supports	42
Options & Accessories	44
Pairing with China Sinks	47
Anatomy of a Leg System	48
Tubing Diameter Reference	49
Contact Palmer	50



JAMESTOWN

J

The smooth refined lines of the Danish Modern foot and a gracefully curved crossbar define the *Jamestown* style, and achieve a tasteful blending of traditional form with modern appeal.



LS2J + WS2 + SS2LP

1½" diameter legs
1" diameter crossbars

shown at left with Stone Forest Harbor sink, optional Teak wood shelf, & low profile shelf supports

LS2J + GS2 + SS2C-G



R-020723

R-020723



The Modern Collection



LS2BR

shown at right with optional glass shelf, & clip shelf supports

1½" diameter legs tapering to
1" diameter at the foot

BRISTOL

BR

Featuring precisely tapered legs, rectangular metal aprons, and hexagonal details, the *Bristol* style expresses a clean blend of modern design and industrial chic.



LS2BR + GS2 + SS2C-G

Table of Contents

click on a page number to navigate

The Palmer Story	4
Custom Sizing	6
Custom Designs	7
Precision Engineering	8

STYLES

Classic Collection	
T Tapered Foot	12
C Decorative Collar	13
BL Ball Foot	14
B Bun Foot	15
Traditional Collection	
E Essex	16
W Westport	17
CAP Capital	18
K Kingston	19
V Victorian	20
P Providence	21
REN Renaissance	22
PREN Petite Renaissance	23
N Newport	24
BAY Bayonne	25
FR Franklin	25
EM Embry	26
SH Soho	27
Modern Collection	
S Studio	28
M Minimal	29
MET Metro	30
MOD Modern	31
SQ Square	32
L Linear	33
J Jamestown	34
BR Bristol	35
Wall Mount Collection	
REG Regency	36
A Apex	37
SG Signature	38

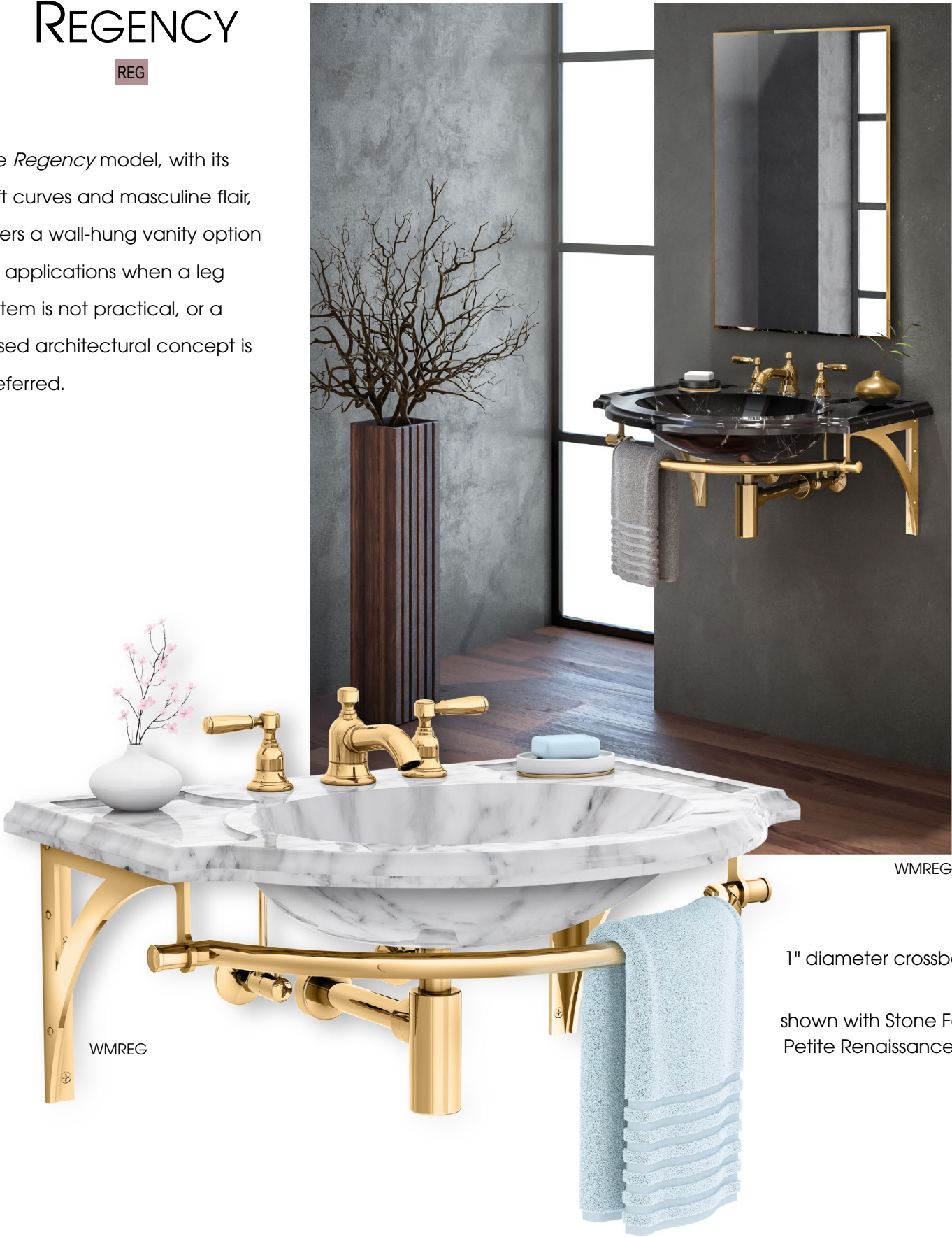
Finishes & Materials	40
Shelving & Supports	42
Options & Accessories	44
Pairing with China Sinks	47
Anatomy of a Leg System	48
Tubing Diameter Reference	49
Contact Palmer	50



REGENCY

REG

The *Regency* model, with its soft curves and masculine flair, offers a wall-hung vanity option for applications when a leg system is not practical, or a raised architectural concept is preferred.



WMREG

1" diameter crossbar
shown with Stone Forest
Petite Renaissance sink



R-020723
R-020723



APEX

A

Featuring minimal exposed metalwork and a structurally sound geometric form, the *Apex* offers a space-saving and simple wall-hung approach to vanity installations.

The *Apex* style is available with decorative collars as shown at right, or without collars as shown below.



WMAC

WMA

1" diameter tubing
shown with Stone Forest
Vintage 27 sink

Table of Contents

click on a page number to navigate

The Palmer Story	4
Custom Sizing	6
Custom Designs	7
Precision Engineering	8

STYLES

Classic Collection	
T Tapered Foot	12
C Decorative Collar	13
BL Ball Foot	14
B Bun Foot	15
Traditional Collection	
E Essex	16
W Westport	17
CAP Capital	18
K Kingston	19
V Victorian	20
P Providence	21
REN Renaissance	22
PREN Petite Renaissance	23
N Newport	24
BAY Bayonne	25
FR Franklin	25
EM Embry	26
SH Soho	27
Modern Collection	
S Studio	28
M Minimal	29
MET Metro	30
MOD Modern	31
SQ Square	32
L Linear	33
J Jamestown	34
BR Bristol	35
Wall Mount Collection	
REG Regency	36
A Apex	37
SG Signature	38

Finishes & Materials	40
Shelving & Supports	42
Options & Accessories	44
Pairing with China Sinks	47
Anatomy of a Leg System	48
Tubing Diameter Reference	49
Contact Palmer	50



The Wall Mount Collection

SIGNATURE
SG

The *Signature* Wall Mount offers a simple yet refined solution to supporting wall-hung vanities, featuring Palmer's machined ball-and-socket details.



WMSG with Duravit Vero sink

1" diameter tubing



R-020723

R-020723



Studio

PALMER
WE DO ALL THE LEG WORK FOR YOU

Table of Contents
click on a page number to navigate

The Palmer Story	4
Custom Sizing	6
Custom Designs	7
Precision Engineering	8

STYLES

Classic Collection	
T Tapered Foot	12
C Decorative Collar	13
BL Ball Foot	14
B Bun Foot	15
Traditional Collection	
E Essex	16
W Westport	17
CAP Capital	18
K Kingston	19
V Victorian	20
P Providence	21
REN Renaissance	22
PREN Petite Renaissance	23
N Newport	24
BAY Bayonne	25
FR Franklin	25
EM Embry	26
SH Soho	27
Modern Collection	
S Studio	28
M Minimal	29
MET Metro	30
MOD Modern	31
SQ Square	32
L Linear	33
J Jamestown	34
BR Bristol	35
Wall Mount Collection	
REG Regency	36
A Apex	37
SG Signature	38

Finishes & Materials	40
Shelving & Supports	42
Options & Accessories	44
Pairing with China Sinks	47
Anatomy of a Leg System	48
Tubing Diameter Reference	49
Contact Palmer	50



The Palmer Story	4
Custom Sizing	6
Custom Designs	7
Precision Engineering	8

STYLES

Classic Collection	
T Tapered Foot	12
C Decorative Collar	13
BL Ball Foot	14
B Bun Foot	15
Traditional Collection	
E Essex	16
W Westport	17
CAP Capital	18
K Kingston	19
V Victorian	20
P Providence	21
REN Renaissance	22
PREN Petite Renaissance	23
N Newport	24
BAY Bayonne	25
FR Franklin	25
EM Embry	26
SH Soho	27
Modern Collection	
S Studio	28
M Minimal	29
MET Metro	30
MOD Modern	31
SQ Square	32
L Linear	33
J Jamestown	34
BR Bristol	35
Wall Mount Collection	
REG Regency	36
A Apex	37
SG Signature	38

Finishes & Materials	40
Shelving & Supports	42
Options & Accessories	44
Pairing with China Sinks	47
Anatomy of a Leg System	48
Tubing Diameter Reference	49
Contact Palmer	50

The Polished Look
of Palmer Perfection

Perma-Clear Acrylic Rod

Seafoam Acrylic Rod

Satin Brass
Lacquered

Reeded Tubing 1½" Diameter

Reeded Tubing 1" Diameter

The Palmer Palette includes a rich range of luxurious and durable platings, PVD coatings, and hand-rubbed "living finish" patinas. With the addition of clear and colored acrylic rods, reeded tubing, and our many functional accessories, your design choices are virtually unlimited...

* contact Palmer for pricing and delivery of Premium PVD and Custom finishes

Polished
Chrome

Polished
Nickel

Satin
Nickel

Polished Brass
Un-Lacquered or PVD*

Satin Brass
PVD*

Polished Gold
PVD*

Satin Gold
PVD*

Aged Brass
Un-Lacquered

Oil Rubbed
Bronze

Semi-Matte Black
Powder Coat

R-020723

R-020723



The Palmer Story	4
Custom Sizing	6
Custom Designs	7
Precision Engineering	8

STYLES

Classic Collection	
T Tapered Foot	12
C Decorative Collar	13
BL Ball Foot	14
B Bun Foot	15
Traditional Collection	
E Essex	16
W Westport	17
CAP Capital	18
K Kingston	19
V Victorian	20
P Providence	21
REN Renaissance	22
PREN Petite Renaissance	23
N Newport	24
BAY Bayonne	25
FR Franklin	25
EM Embry	26
SH Soho	27
Modern Collection	
S Studio	28
M Minimal	29
MET Metro	30
MOD Modern	31
SQ Square	32
L Linear	33
J Jamestown	34
BR Bristol	35
Wall Mount Collection	
REG Regency	36
A Apex	37
SG Signature	38

Finishes & Materials	40
Shelving & Supports	42
Options & Accessories	44
Pairing with China Sinks	47
Anatomy of a Leg System	48
Tubing Diameter Reference	49
Contact Palmer	50

Palmer offers the perfect solution for incorporating additional storage within your washstand. All of our shelves are handcrafted in the USA, and are custom fabricated, one at a time, to your unique specifications.



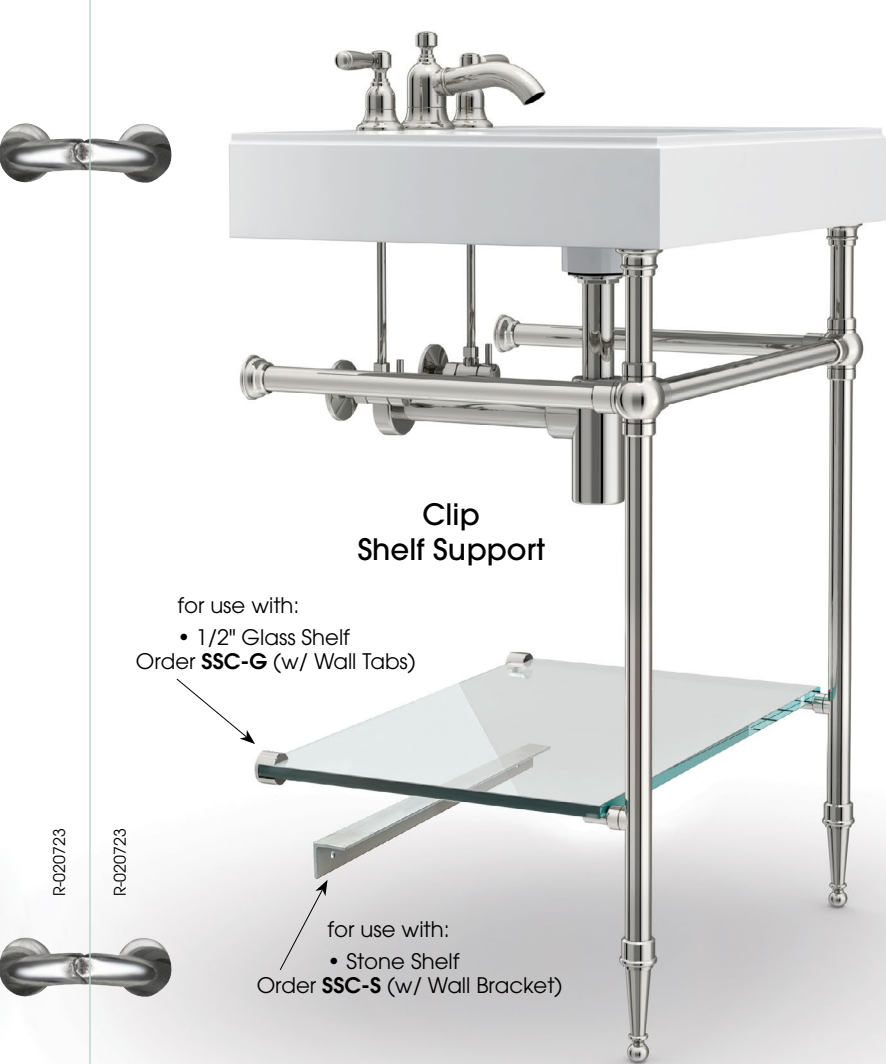
Rail Style Shelf Support

- for use with:
- Hotel Shelf
 - Glass Shelf
 - Teak Shelf
 - Stone Shelf



Low Profile Shelf Support

- for use with:
- Hotel Shelf
 - Glass Shelf
 - Teak Shelf
 - Stone Shelf



Clip Shelf Support

- for use with:
- 1/2" Glass Shelf
- Order **SSC-G** (w/ Wall Tabs)

- for use with:
- Stone Shelf
- Order **SSC-S** (w/ Wall Bracket)



Split Collar Shelf Support

- for use with:
- Stone Shelf

stone shelf provided by others

shelf support systems to meet your shelving needs.

Palmer Industries has engineered four unique

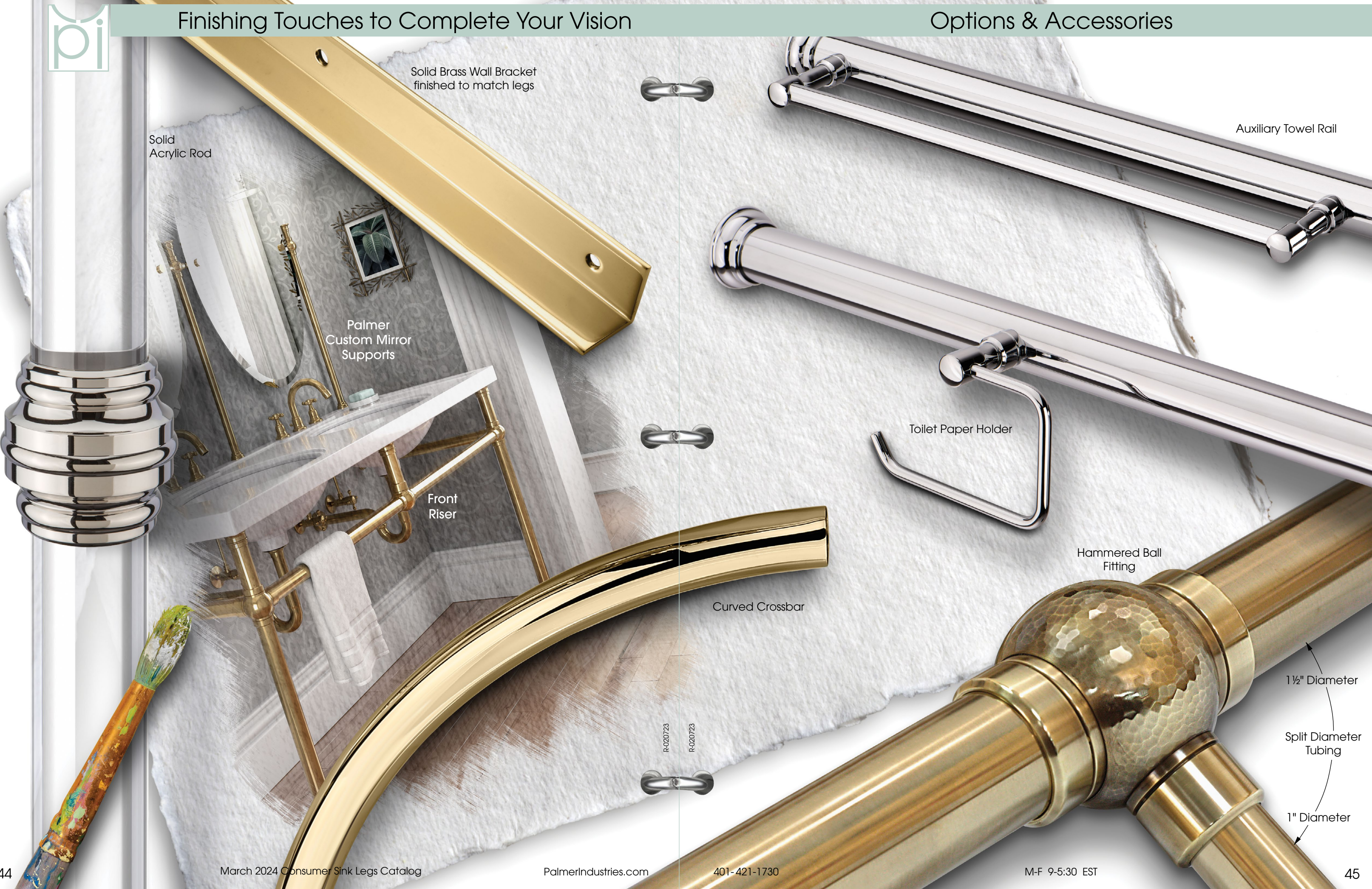


The Palmer Story	4
Custom Sizing	6
Custom Designs	7
Precision Engineering	8

STYLES

Classic Collection	
T Tapered Foot	12
C Decorative Collar	13
BL Ball Foot	14
B Bun Foot	15
Traditional Collection	
E Essex	16
W Westport	17
CAP Capital	18
K Kingston	19
V Victorian	20
P Providence	21
REN Renaissance	22
PREN Petite Renaissance	23
N Newport	24
BAY Bayonne	25
FR Franklin	25
EM Embry	26
SH Soho	27
Modern Collection	
S Studio	28
M Minimal	29
MET Metro	30
MOD Modern	31
SQ Square	32
L Linear	33
J Jamestown	34
BR Bristol	35
Wall Mount Collection	
REG Regency	36
A Apex	37
SG Signature	38

Finishes & Materials	40
Shelving & Supports	42
Options & Accessories	44
Pairing with China Sinks	47
Anatomy of a Leg System	48
Tubing Diameter Reference	49
Contact Palmer	50





THE PLATED FINISHES...

LUXURIOUS LUSTER
OR SATIN SHEEN

Our chrome and nickel plated finishes are architectural grade, consistent with the quality of premium decorative plumbing fixtures. These plated finishes are not lacquered and the nickel finishes may require occasional cleaning.



Polished
Chrome
(PC)



Polished
Nickel
(PN)



Satin
Nickel
(SN)



Powder Coat
Semi-Matte Black
(MB)



Palmer washstands are the natural choice for supporting china or porcelain sinks...the perfect marriage.

Palmer leg systems can be sized to accommodate almost any choice of china sink.

Sizing a stand to properly fit a china sink can be accomplished three ways:

1. Choose a china sink from our online database located on our website Resources page at sinklegs.com/sinks. This database represents a current listing of sinks that Palmer has evaluated. Palmer will build the stand to fit the sink exactly.
2. Drop-ship the sink directly to Palmer for proper sizing evaluation. Palmer will then take all the appropriate measurements, and determine a washstand size that fits the sink perfectly. Please contact palmer for shipping arrangements.
3. Order the washstand larger than required with the intention of cutting the leg system on-site to fit the sink. Note: shelves cannot be field cut.



Satin Brass
Lacquered
(SBL)



Polished Brass
Un-Lacquered
(PBUL)



Aged Brass
Un-Lacquered
(ABUL)



Oil Rubbed
Bronze
(ORB)

THE LIVING FINISHES...

AGING WITH BEAUTY, GRACE,
AND A RICH PATINA

The living finishes offer an ever-changing patina, as their tone and luster will gracefully age with time and unique environmental conditions. These hand-crafted artisanal finishes are subject to variations in lightness and color tone.



THE PVD FINISHES...

DURABLE, COLORFUL,
AND TARNISH-FREE
FINISHING TECHNOLOGY

Our premium PVD finishes (Physical Vapor Deposition) incorporate a coating of specialized metal that provides a durable, tarnish-free, and lasting color tone.

* Contact Palmer for pricing & delivery of PVD finishes



Polished
Brass PVD*
(PBPVD)



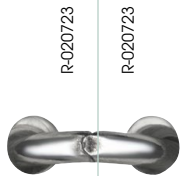
Satin
Brass PVD*
(SBPVD)



Polished
Gold PVD*
(PGPVD)



Satin
Gold PVD*
(SGPVD)



Minimal with
Duravit DuraStyle sink

Classic Collection

T	Tapered Foot	12
C	Decorative Collar	13
BL	Ball Foot	14
B	Bun Foot	15

Traditional Collection

E	Essex	16
W	Westport	17
CAP	Capital	18
K	Kingston	19
V	Victorian	20
P	Providence	21
REN	Renaissance	22
PREN	Petite Renaissance	23
N	Newport	24
BAY	Bayonne	25
FR	Franklin	25
EM	Embry	26
SH	Soho	27

Modern Collection

S	Studio	28
M	Minimal	29
MET	Metro	30
MOD	Modern	31
SQ	Square	32
L	Linear	33
J	Jamestown	34
BR	Bristol	35

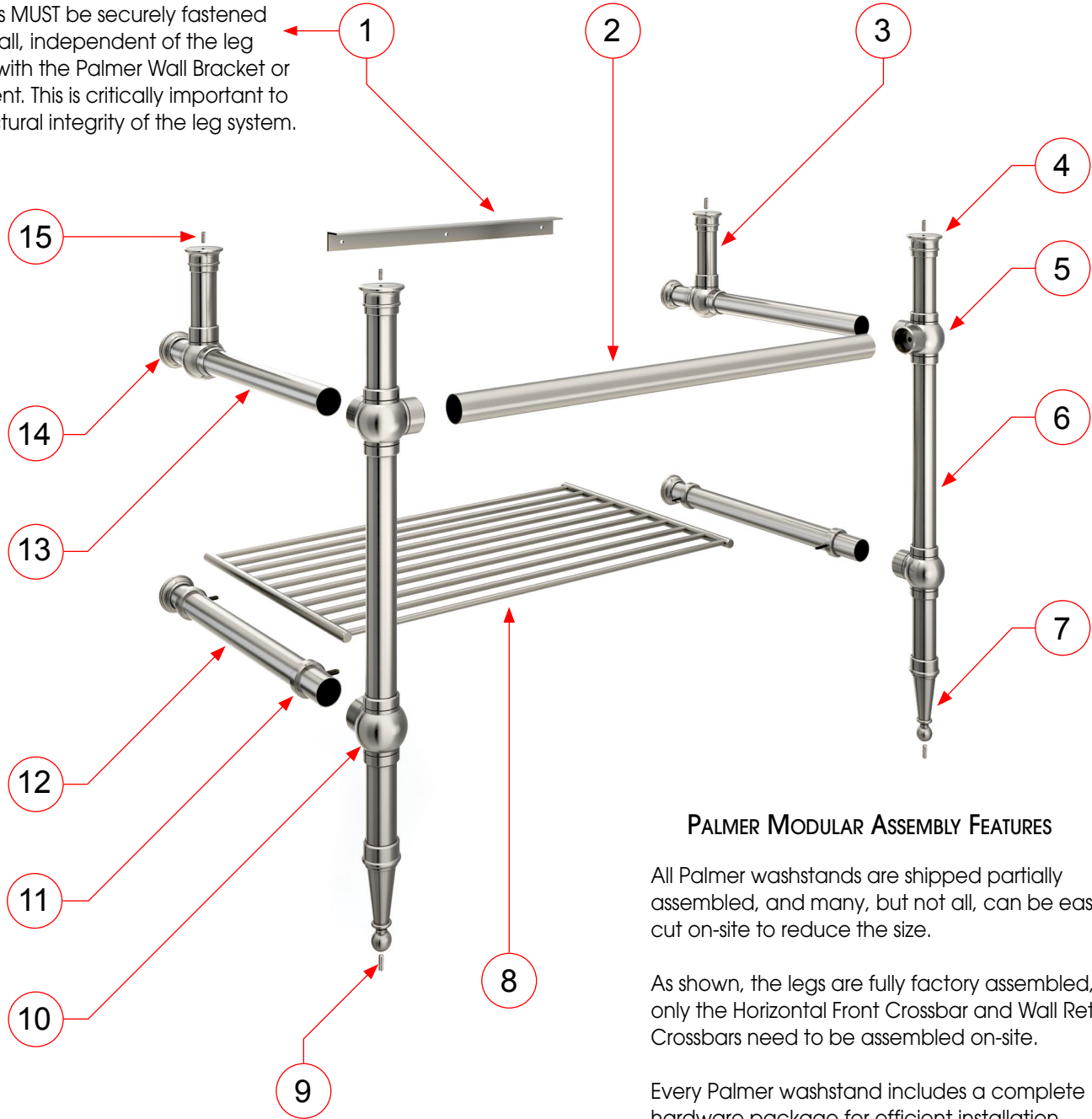
Wall Mount Collection

REG	Regency	36
A	Apex	37
SG	Signature	38

Finishes & Materials	40
Shelving & Supports	42
Options & Accessories	44
Pairing with China Sinks	47
Anatomy of a Leg System	48
Tubing Diameter Reference	49
Contact Palmer	50



Counters MUST be securely fastened to the wall, independent of the leg system, with the Palmer Wall Bracket or equivalent. This is critically important to the structural integrity of the leg system.



PALMER MODULAR ASSEMBLY FEATURES

All Palmer washstands are shipped partially assembled, and many, but not all, can be easily cut on-site to reduce the size.

As shown, the legs are fully factory assembled, so only the Horizontal Front Crossbar and Wall Return Crossbars need to be assembled on-site.

Every Palmer washstand includes a complete hardware package for efficient installation.

1. Wall Bracket

2. Front Crossbar

3. Rear Riser (optional)

4. Top Cap

5. Corner Joint

6. Leg Tube

7. Foot
8. Shelf (optional)

9. Floor Pin

10. Shelf Support Tee Joint (optional)

11. Shelf Support Ring (optional)

12. Shelf Support Tube (optional)

13. Wall Return Crossbar

14. Wall Flange

15. Counter Pin

ACTUAL SIZE
TUBING DIAMETERS

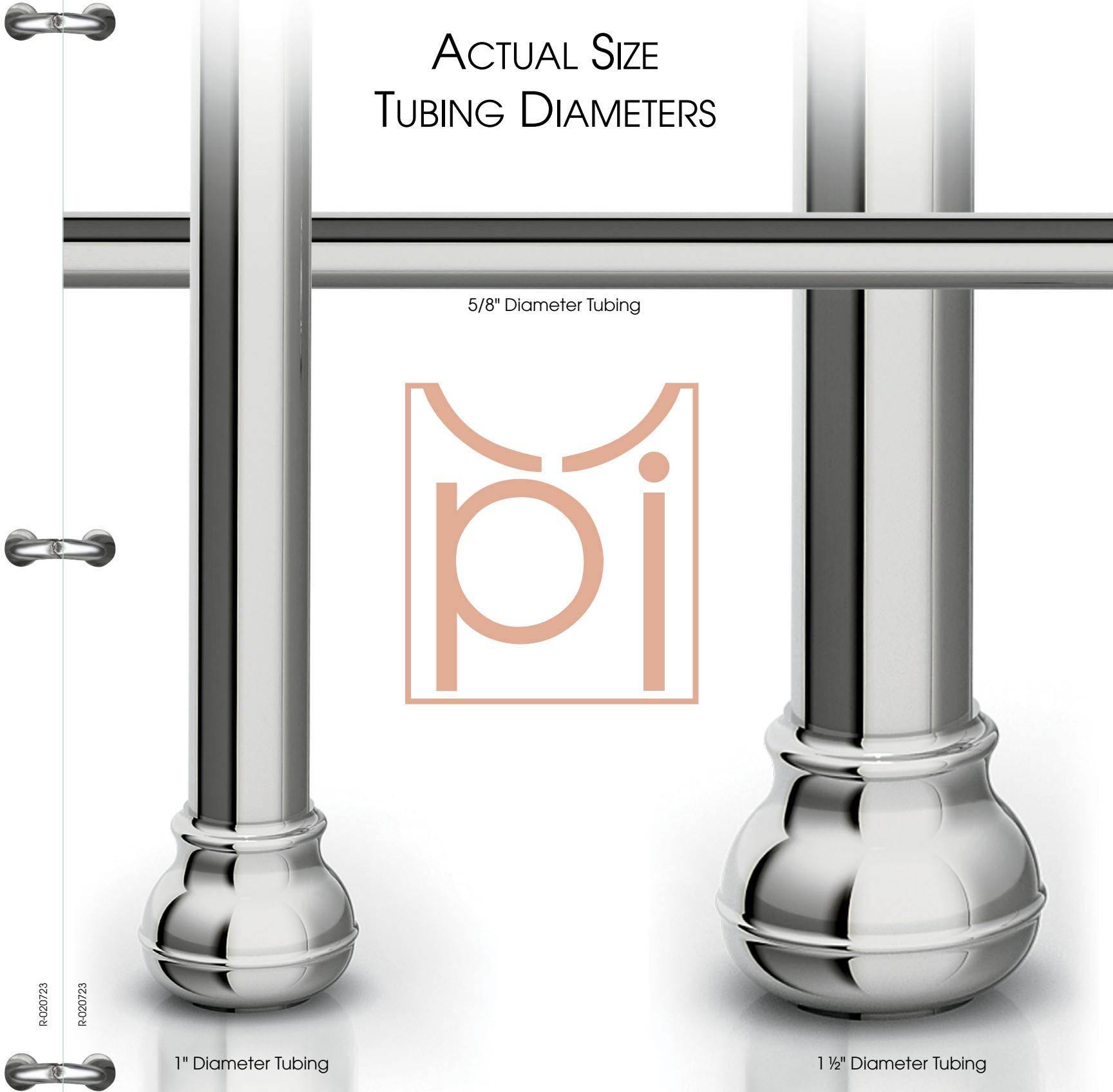


Table of Contents

click on a page number to navigate

The Palmer Story	4
Custom Sizing	6
Custom Designs	7
Precision Engineering	8

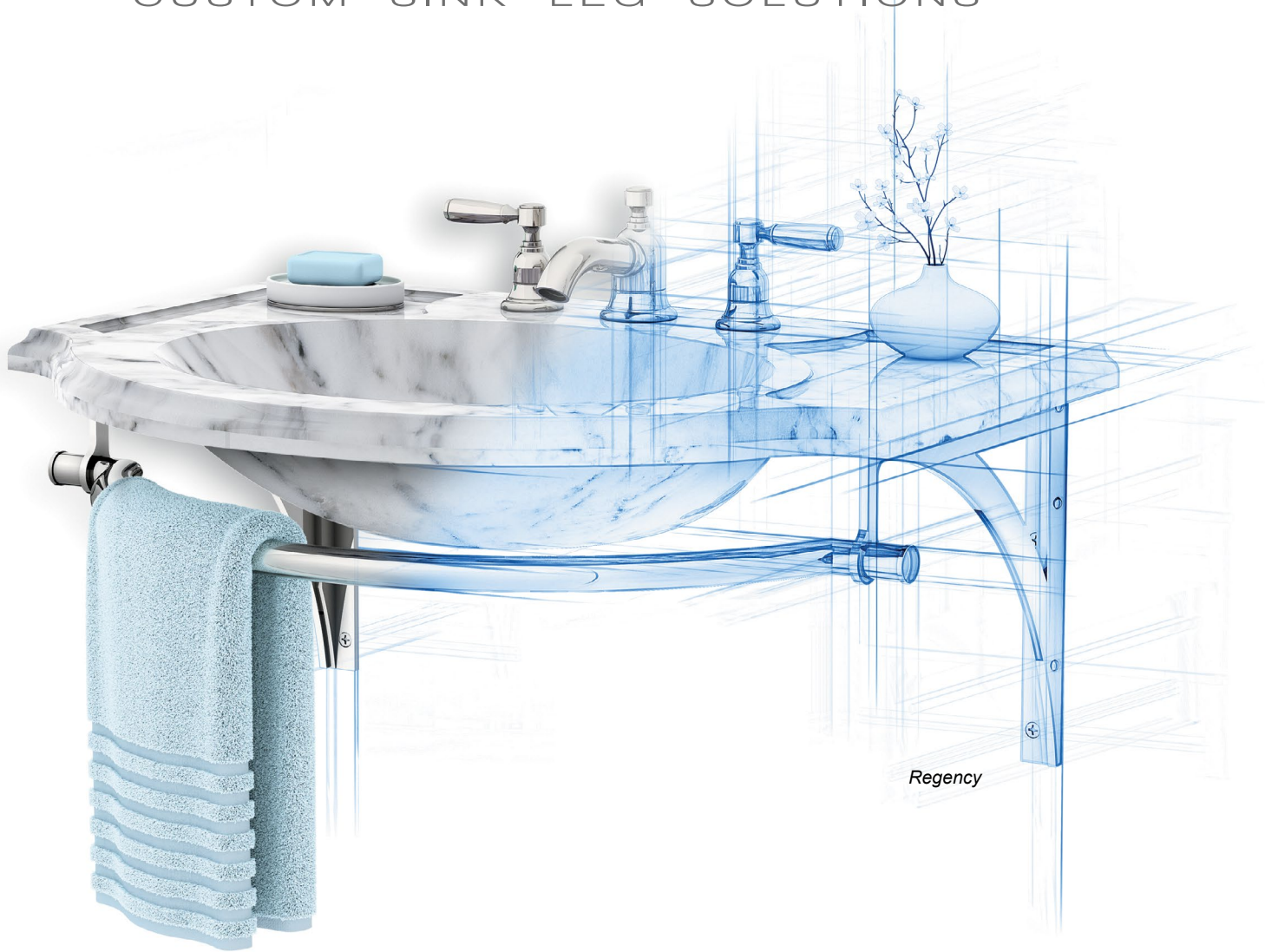
STYLES

Classic Collection	
T Tapered Foot	12
C Decorative Collar	13
BL Ball Foot	14
B Bun Foot	15
Traditional Collection	
E Essex	16
W Westport	17
CAP Capital	18
K Kingston	19
V Victorian	20
P Providence	21
REN Renaissance	22
PREN Petite Renaissance	23
N Newport	24
BAY Bayonne	25
FR Franklin	25
EM Embry	26
SH Soho	27
Modern Collection	
S Studio	28
M Minimal	29
MET Metro	30
MOD Modern	31
SQ Square	32
L Linear	33
J Jamestown	34
BR Bristol	35
Wall Mount Collection	
REG Regency	36
A Apex	37
SG Signature	38

Finishes & Materials	40
Shelving & Supports	42
Options & Accessories	44
Pairing with China Sinks	47
Anatomy of a Leg System	48
Tubing Diameter Reference	49
Contact Palmer	50

PALMER INDUSTRIES

CUSTOM SINK LEG SOLUTIONS



Palmer Industries

info@palmerindustries.com

palmerindustries.com

sinklegs.com

phone: (401) 421-1730

American Manufacturing



Warwick, Rhode Island

© 2024 Palmer Industries all rights reserved